

# Customized Surveys for Tailored Solutions.

## Site Surveys

Understanding your IT environment at the physical layer is essential for any future treatment you might be considering. Our Site Survey offering concludes with a comprehensive package that includes both an executive level summary of the data and the most granular details, allowing you to zoom in or out as needed. We assess current conditions - low voltage, power, core devices, and end-user technology - and take note of environmental and structural factors that will help inform decisions. We also recommend next steps to maintain the momentum of your project.

### DELIVERABLES INCLUDE:

- ✓ Low voltage documentation, testing, and assessment
- ✓ Documentation of MDF/IDF technology
- ✓ MDF/IDF environmental assessment
- ✓ Circuit and fiber documentation
- ✓ Detailed documentation of EUT
- ✓ Summary PowerPoint presentation
- ✓ Marked up floor plan
- ✓ Visio network diagram
- ✓ Rack Elevation
- ✓ Recommended next steps
- ✓ Pictures to give a visual
- ✓ Switch and port counts

### ABOUT SERVICE



#### COMPREHENSIVE PACKAGE

A package that encompasses both an executive level summary of the data and the most granular details. This allows you the flexibility to zoom in or out as per your requirements.



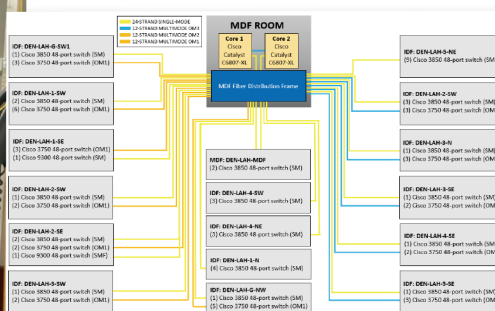
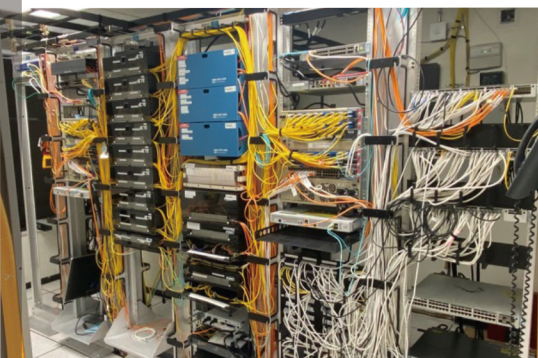
#### THOROUGH ASSESSMENT

We evaluate the existing conditions encompassing low voltage, core devices, and end-user technology. We also take into account environmental and structural factors that will impact decision-making.



#### RECOMMENDATIONS

To ensure the continuous progress of your project, we offer recommendations on the subsequent actions to maintain momentum.



Precise and efficient data collection is paramount for achieving successful outcomes. By leveraging industry-leading tools, streamlined processes, and our deep subject matter expertise, we are eager to form a partnership with you to address your unique scope of work.